






22.5 × 7.50	Maxion Part Number		Bolt Circle Nr.x Diameter		Mounting Type	Fixation Hole(mm)	Center Bore (mm)	Ventilation Hole	Offset (mm)	Disc Thickness (mm)	Valve hole diameter (mm)	Maximum Load (Kg)	Weight (Kg)
	75225 S090011-00	-	8	285	stud	A5	221 + 1	6	162	13.5	9.7	3150	40.5
	75225 S090011-00	-	8	285	stud	A5	221 + 1	6	153	13.5	9.7	3150	40.5
	75225 H130013 -M1	disc brake	10	335	hub	φ 26	281 + 0,2	10	159	13.5	9.7	3250	39.0
	75225 H130009 -00	-	10	335	hub	φ 26	281 + 0,2	10	160	12.5	9.7	3150	36.5
Permitted tyre sizes (22.5×7.5) 10 R 22.5 -11R 22.5 -255/70R 22.5 -275/70R 22.5 -275/80R 22.5													

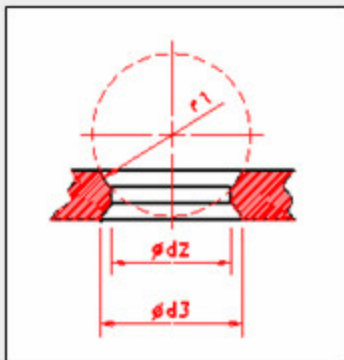
22.5 × 9.00	Maxion Part Number		Bolt Circle Nr.x Diameter		Mounting Type	Fixation Hole(mm)	Center Bore (mm)	Ventilation Hole	Offset (mm)	Disc Thickness (mm)	Valve hole diameter (mm)	Maximum Load (Kg)	Weight (Kg)
	90225 H130002-00	-	10	335	hub	φ 26	281 + 0,2	10	176	13.5	9.7	3750	40.5
	90225 H130008-00	-	10	335	hub	φ 26	281 + 0,2	10	176	14.5	9.7	4000	41.0
	90225 H130004-01	disc brake	10	335	hub	φ 26	281 + 0,2	10	176	14.5	9.7	4000	42.0
	90225 S130003 -00(1)	-	10	335	stud	A4	281 + 0,2	10	176	13.5	9.7	3750	40.5
	90225 S130007 -00(1)	-	10	335	stud	A4	281 + 0,2	10	176	14.5	9.7	4000	41.0
Permitted tyre sizes (22.5×9.0) 12 R 22.5 -13R 22.5 -285/60R 22.5 -295/60R 22.5 -295/80R 22.5 -305/60R 22.5 -315/60R 22.5 -315/70R 22.5 -315/75R 22.5 -315/80R 22.5													

22.5 × 8.25	Maxion Part Number		Bolt Circle Nr.x Diameter		Mounting Type	Fixation Hole(mm)	Center Bore (mm)	Ventilation Hole	Offset (mm)	Disc Thickness (mm)	Valve hole diameter (mm)	Maximum Load (Kg)	Weight (Kg)
	82225 H130004-M1	disc brake	10	335	hub	φ 26	281 + 0,2	10	170	12.5	9.7	3550	41.0
	82225 H130005-00	-	10	335	hub	φ 26	281 + 0,2	10	165	13.5	9.7	3750	37.5
	82225 H130006-00	-	10	335	hub	φ 26	281 + 0,2	10	170	13.5	9.7	3550	38.0
	82225 S130012 -00(1)	-	10	335	stud	A4	281 + 0,2	10	165	13.5	9.7	3750	37.5
Permitted tyre sizes (22.5×8.25) 11 R 22.5 -12R 22.5 -265/70R 22.5 -275/70R 22.5 -275/80R 22.5 -295/80R 22.5 -305/70R 22.5													

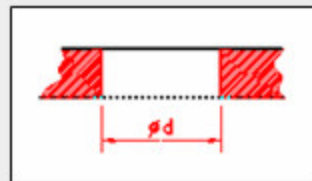
22.5 ×11.75	Maxion Part Number		Bolt Circle Nr.x Diameter		Mounting Type	Fixation Hole(mm)	Center Bore (mm)	Ventilation Hole	Offset (mm)	Disc Thickness (mm)	Valve hole diameter (mm)	Maximum Load (Kg)	Weight (Kg)
	11225 H130015-00	-	10	335	hub	φ 26	281 + 0,2	10	inset 0	11.0	9.7	4500	39.5
	11225 H130018-00	-	10	335	hub	φ 26	281 + 0,2	10	150	14.5	9.7	4500	44.2
	11225 H130016-00	-	10	335	hub	φ 26	281 + 0,2	10	inset 120	13.5	9.7	4500	42.5
	11225 S130017 -00(1)	-	10	335	stud	A3	281 + 0,2	10	inset 0	11.0	9.7	4500	39.5
Permitted tyre sizes (22.5×11.75) 365/70 R 22.5 -375/90 R 22.5 -385/55R 22.5 -385/65R 22.5 -425/65R 22.5													

SPHERICAL STUD HOLES

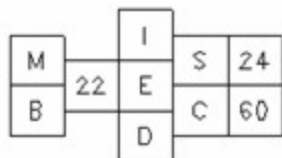
Designation	Diameter ϕd_2	Diameter ϕd_3	Radius r_1
A3	$\phi 26.0^{+0.2}_{-0.0}$	$\phi 32.0^{+0.5}_{-0.0}$	18
A4	$\phi 27.0^{+0.2}_{-0.0}$	$\phi 32.0^{+0.5}_{-0.0}$	18
A5	31.9 32.6	37.1 37.7	22.2



HUB MOUNTING TYPE



TYPE OF STUD HOLE(STUD HOLE CODE)



DIAMETER / ANGLE

S - SPHERICAL / C - CONICAL

I - INSIDE / E - EXTERNAL / D - DOUBLE SIDE

STUD DIAMETER

M - HUB CENTRING OR DOUBLE CENTRING / B - BOLT CENTRING